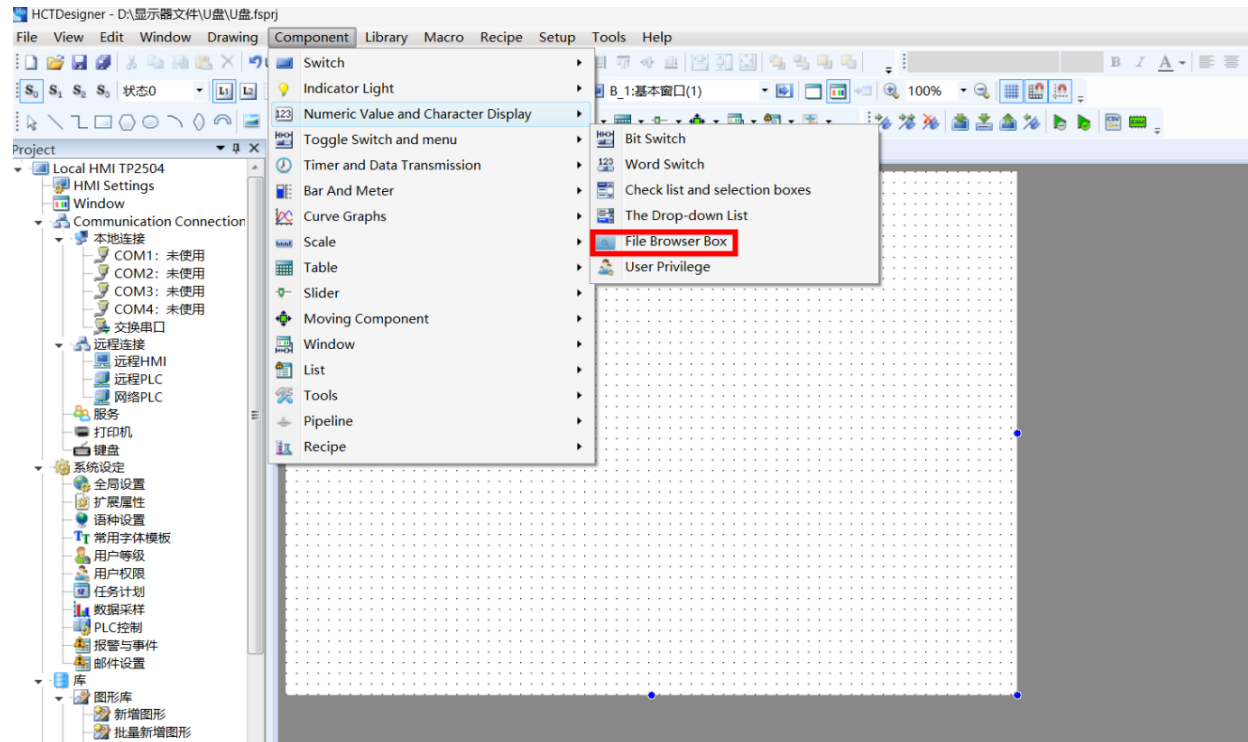


File browser.



2. If there is no items are added in the suffix name, all files will be displayed. If add item, only the related files will be displayed.


Notice the note:

File Browser Box

General Display

Font Type

Font Size: 24

Colors: 

Only Show the File with Designated Suffix.

Suffix Name

Add Items

Delete

Date Format:

Date Format: DD*MM*YY

Separator: /

Notes:

SRW300~349: the absolute path character string for file view.

☐ Absolute path of output file

SRW350~389: File Name Character String

SRW390: execute file browser.

0-Cancel or No Operation. 3-Import the Formula to HMI

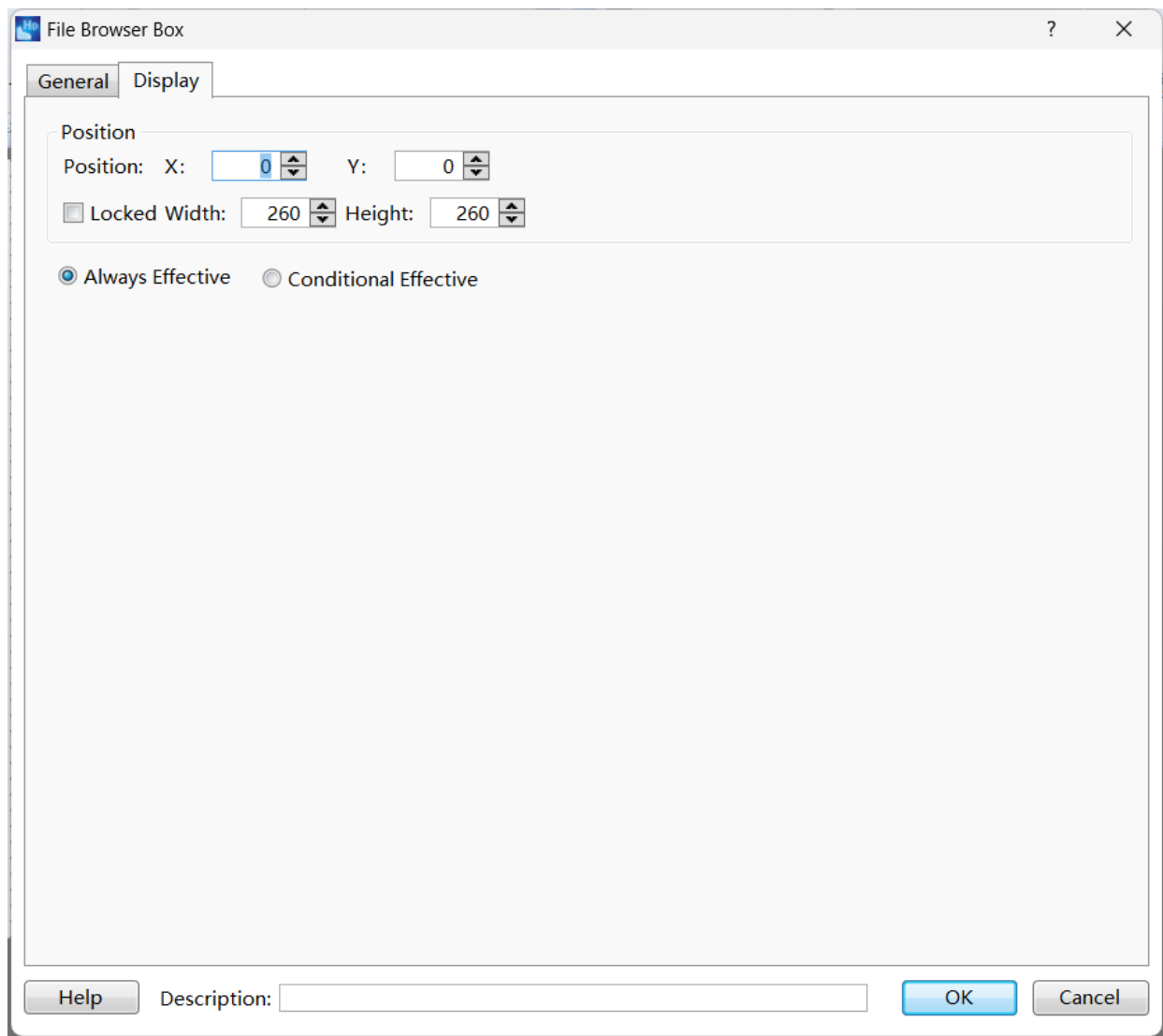
1-Import the Project to HMI 4-export recipe to SD Card or U-disk

2-Export to SD Card or U-disk from HMI 5-Other Files Operation

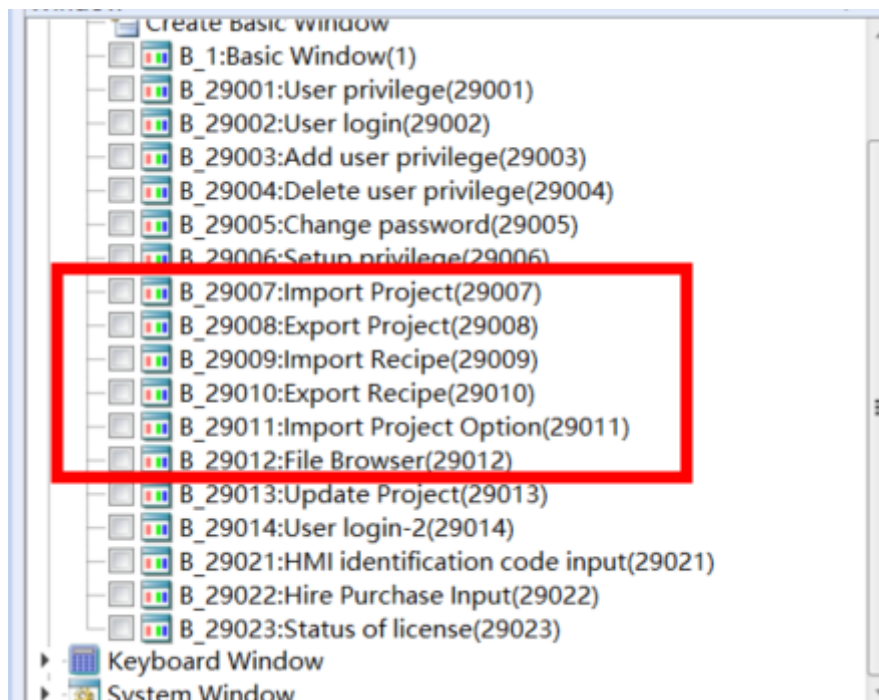
Help Description:

OK Cancel

In display page you can select condition display.



You can check the related operation in the red box at the right side window.



Use the Import Project as a example

The path: Display the directory where the project is located,

When import the project the FPG file must be selected, otherwise the import operation will fail.

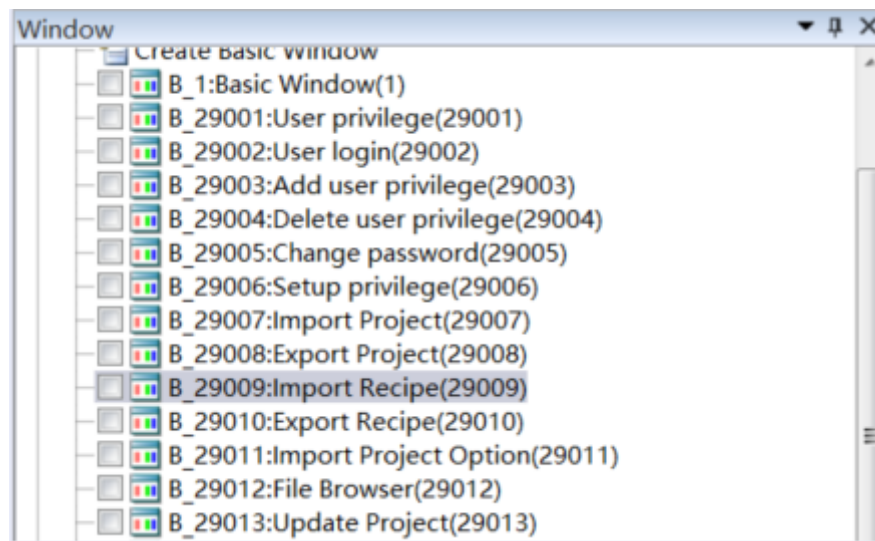
Import Project:

Path: A.A.A.A.A.A.A.A.A.A.A.A.A.A.A.A.A.A

Please select the FPG file, then enter the project password below.

Import Project

Here is the related setting page



Simulation page:

