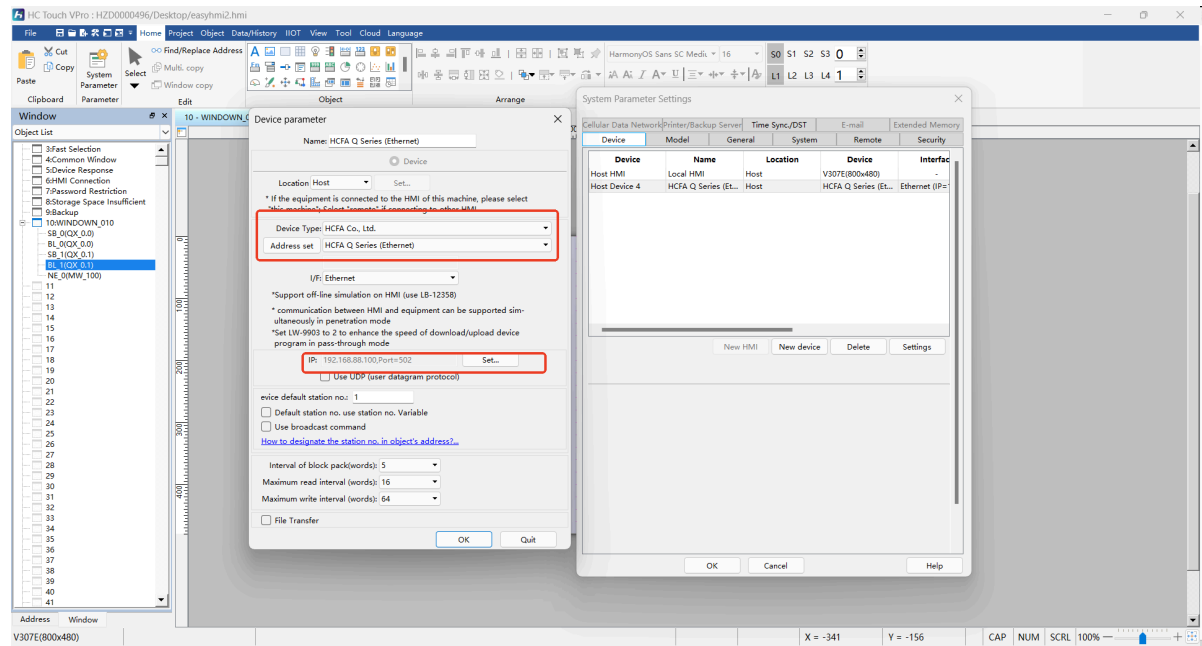


TCP connection Q0 with V300 series

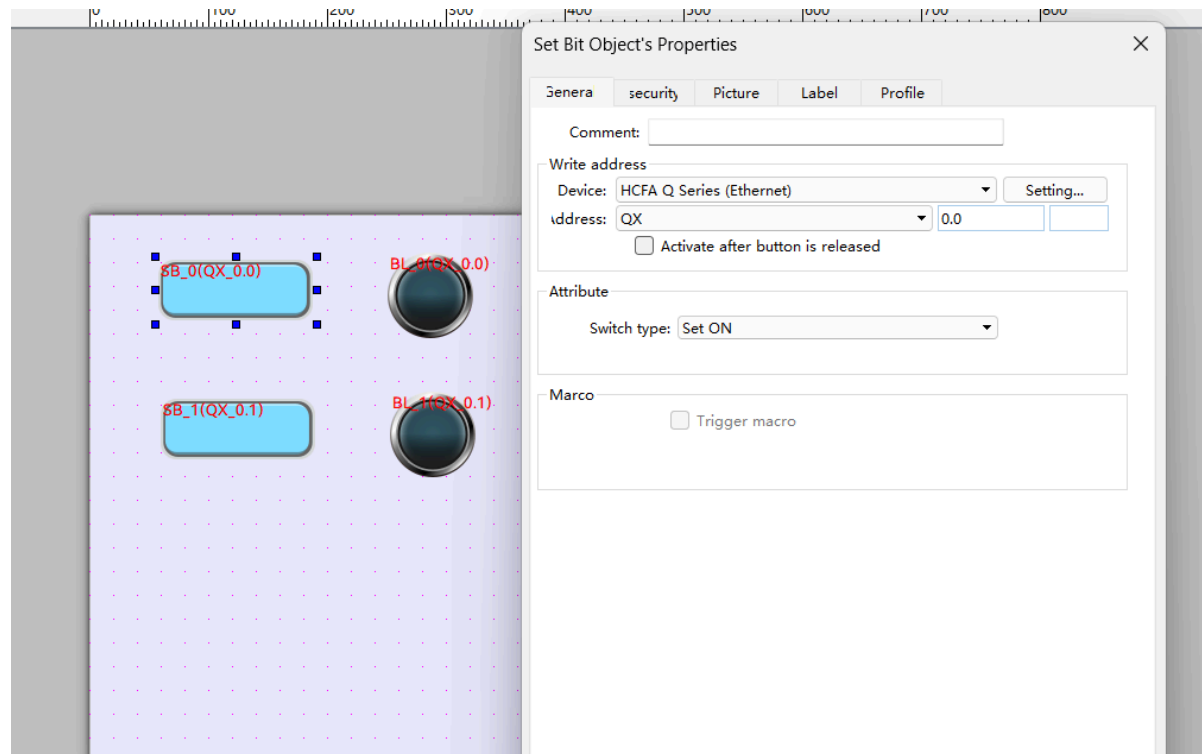
HMI Setting part

1.HMI project settings

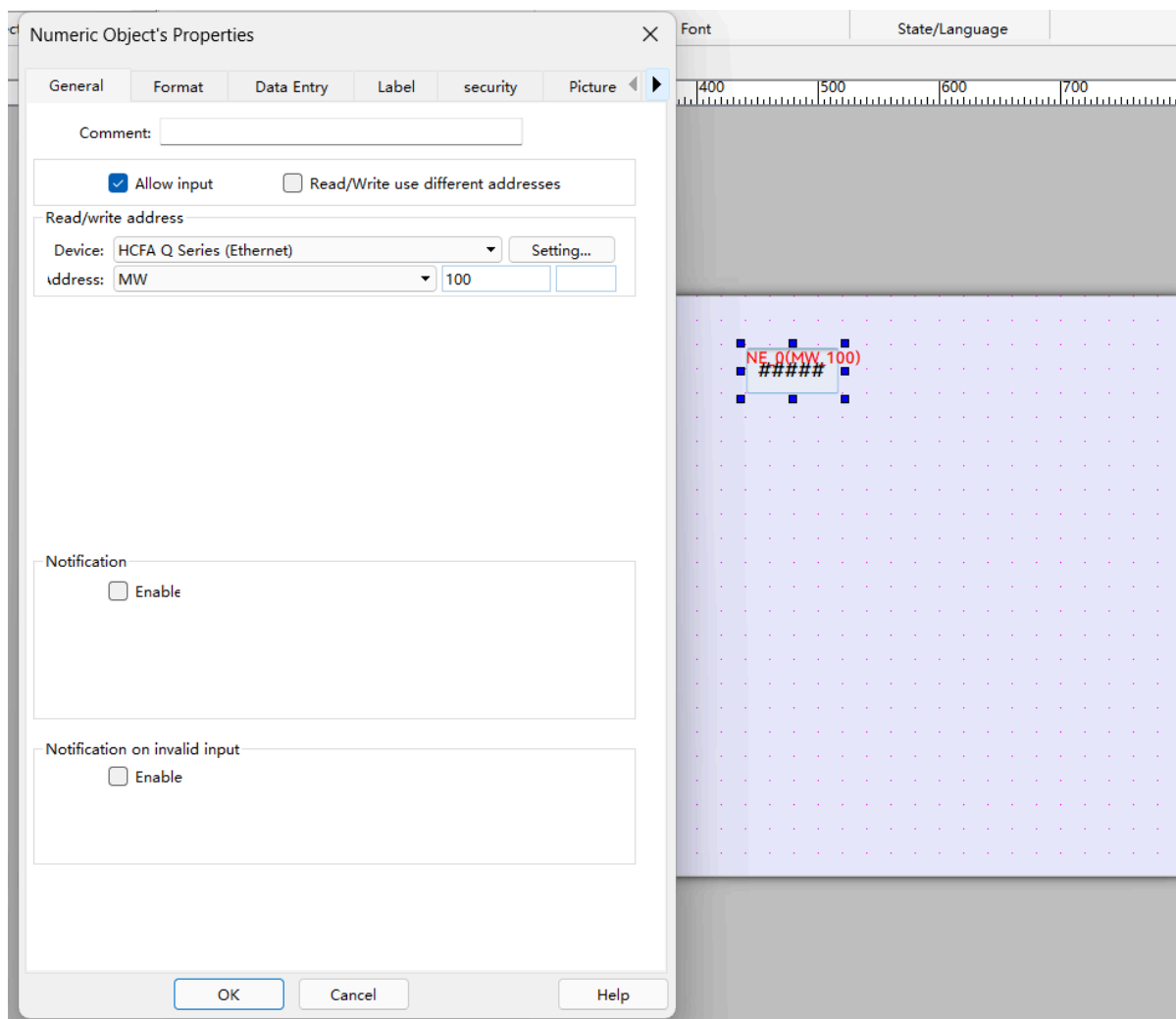
1. Open a new Project and the choose the PLC type and also change the IP address this PLC
2. Q0 default IP is 192.168.88.100, So the IP address set the same.



2. Put some basic components for testing. Here we use the PLC address of output QX0.0 and 0.1



and also a numeric input address MW100



2.HMI IP setting

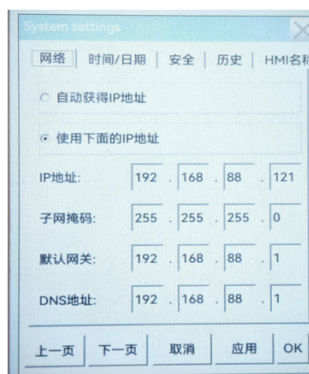
– Basic Functions of the Software

■ Communication between HMI and Controller - HMI Settings

- Ethernet communication requires that the HMI and controller are on the same network segment, and the HMI IP is set as follows

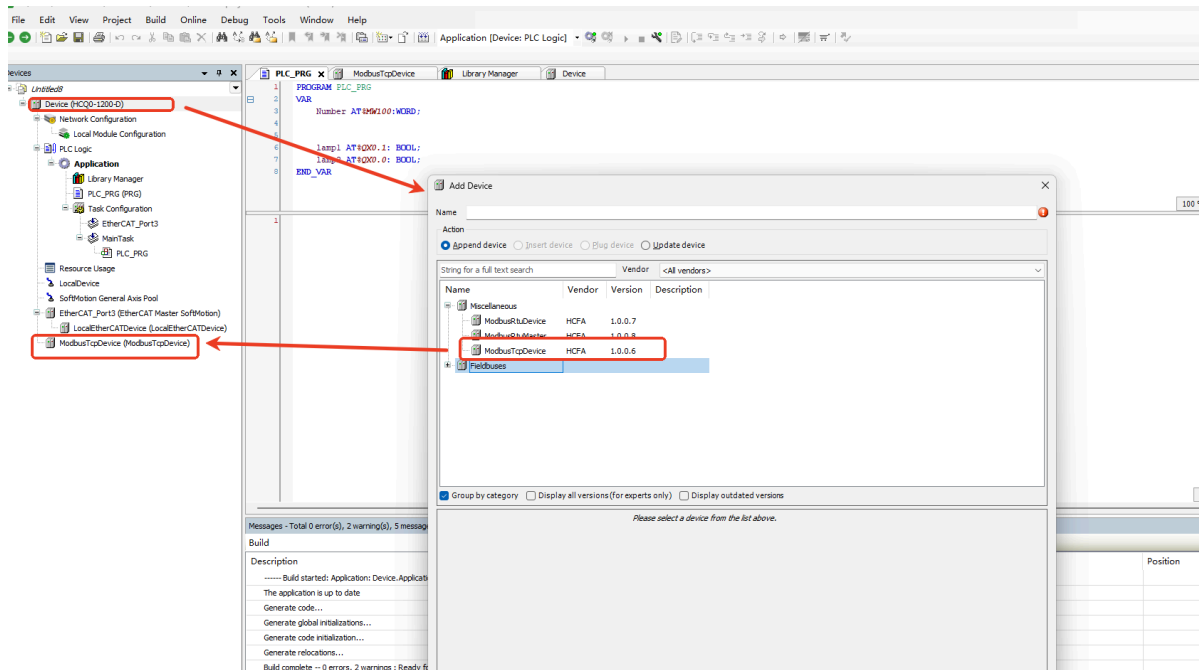
1, step ①: HMI power on, open the system settings (HMI settings button in the lower right corner of the point open, select the first is the system settings, you need to enter the password (default: 111111);

2, Step 2: Enter the system, in the [Network] column select the use of the following IP address, and configure the IP address is shown below (to IP address 192.168.6.121 as an example); finally click [Apply] -> [OK]



Q series setting:

1.Right click add to add the TCP connection. As the following shows.



2.Use the same address as the setting in HMI project

```
PROGRAM PLC_PRG
VAR
    Number AT$MW100:WORD;
    lamp1 AT$QX0.1: BOOL;
    lamp2 AT$QX0.0: BOOL;
END_VAR
```

Online Simulation testing result:

