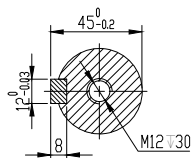
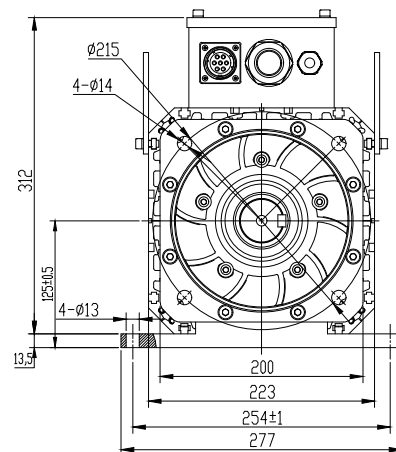
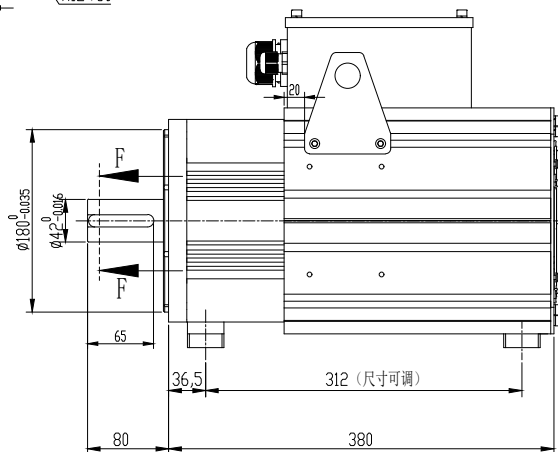
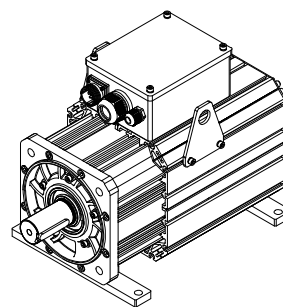
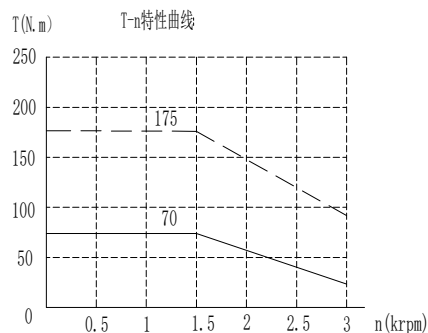


| 风机参数 | | |
|------|------|------|
| 名称 | 数据 | 单位 |
| 额定电压 | 220 | V AC |
| 额定电流 | 0.22 | A |
| 电容 | 2 | uF |
| 额定转速 | 2600 | RPM |



--- 过载特性曲线
 —— 额定特性曲线



电机参数 Motor parameter

| 名称 | 单位 | 数据 |
|---------------------------------|-------------------------------------|--------------------|
| 额定功率 Rated power | kW | 11 |
| 额定电压 Rated voltage | V | 380 |
| 额定转速 Rated speed | rpm | 1500 |
| 最高转速 Maximum speed | rpm | 3000 |
| 额定频率 Rated frequency | Hz | 100 |
| 最高频率 Maximum frequency | Hz | 200 |
| 额定电流 Rated current | A | 26 |
| 峰值电流 Peak current | A | 65 |
| 额定转矩 Rated torque | N.m | 70 |
| 峰值转矩 Peak torque | N.m | 175 |
| 线电阻 Line resistance | Ω | 0.64 |
| 线电感 Line inductance | mH | 6.9 |
| D轴电感 D-axis inductance | mH | 2.2 |
| Q轴电感 Q-axis inductance | mH | 4.6 |
| 电气时间常数 electrical time constant | ms | 10.78 |
| 线反电势 Back electromotive force | V/Krpm | 169 |
| 转矩系数 Torque coefficient | N.m/Arms | 2.69 |
| 转子惯量 Rotor inertia | kg.m ² ×10 ⁻⁴ | 75 |
| 反馈元件 Feedback element | | 23bit |
| 冷却方式 Cooling method | | Forced air cooling |
| 绝缘等级 Insulation class | | H |
| 防护等级 Protection class | | IP54 |

抱闸参数 Holding brake parameter

| | | |
|-------------------------------|-------|--------------|
| 抱闸电压 Holding brake voltage | V | / |
| 抱闸电流 Holding brake current | A | / |
| 抱闸扭矩 Holding brake torque | N.m | / |
| 抱闸功率 Holding brake power | W | / |
| 抱闸电阻 Holding brake resistance | Ω | / |
| 绝缘等级 Insulation level | | F |
| 绝缘电阻 Insulation resistance | MΩ | / |
| 绝缘耐压 Dielectric strength | | 1200V/5mA/1S |
| 使用温度 Operating temperature | °C | / |
| 释放电压 Release voltage | V | / |
| 吸引电压 Attraction voltage | V | / |
| 最大转速 Maximum speed | r/min | / |
| 运转噪音 Running noise | dB | / |

| 电机动力引出线 | | | | 电机编码器引出线 | | | | | | | | 电机端子排引出线 | | | | | | |
|---------|------------|---|---|----------|------------|----|----|-----|----|-----|-----|----------|-------------|---------|--------|--------|-------|-------|
| 位号 | 1 | 2 | 3 | 4 | 1 | 2 | 3 | 4 | 5 | 6 | 7 | 8--15 | PTC+ | PTC- | KTY84+ | KTY84- | 220 | 0 |
| 颜色 | 红 | 黄 | 蓝 | 黄绿 | 屏蔽 | 白 | 棕 | 黄 | 黑 | 蓝 | 红 | / | 蓝 | 蓝 | 棕 | 白 | 蓝 | 黑 |
| 定义 | U | V | W | PE | PE | E- | E+ | SD- | 0V | SD+ | +5V | / | PTC130+ | PTC130- | KTY84+ | KTY84- | 风扇电源+ | 风扇电源- |
| 视图 | | | | | | | | | | | | | | | | | | |
| | 防水接头: PG29 | | | | 航插YD28K15芯 | | | | | | | | 防水接头N20*1.5 | | | | | |

| | | | |
|--------------------------|------------------------------|-----|--|
| KCFA 浙江禾川科技股份有限公司 | | 视图 | |
| 物料名称: | 伺服电机 | 设计: | |
| 物料编码: | 见表格 | 日期: | |
| 物料规格: | SV-X7E MM20-11D15CH-DNOF-OBH | 版本: | |